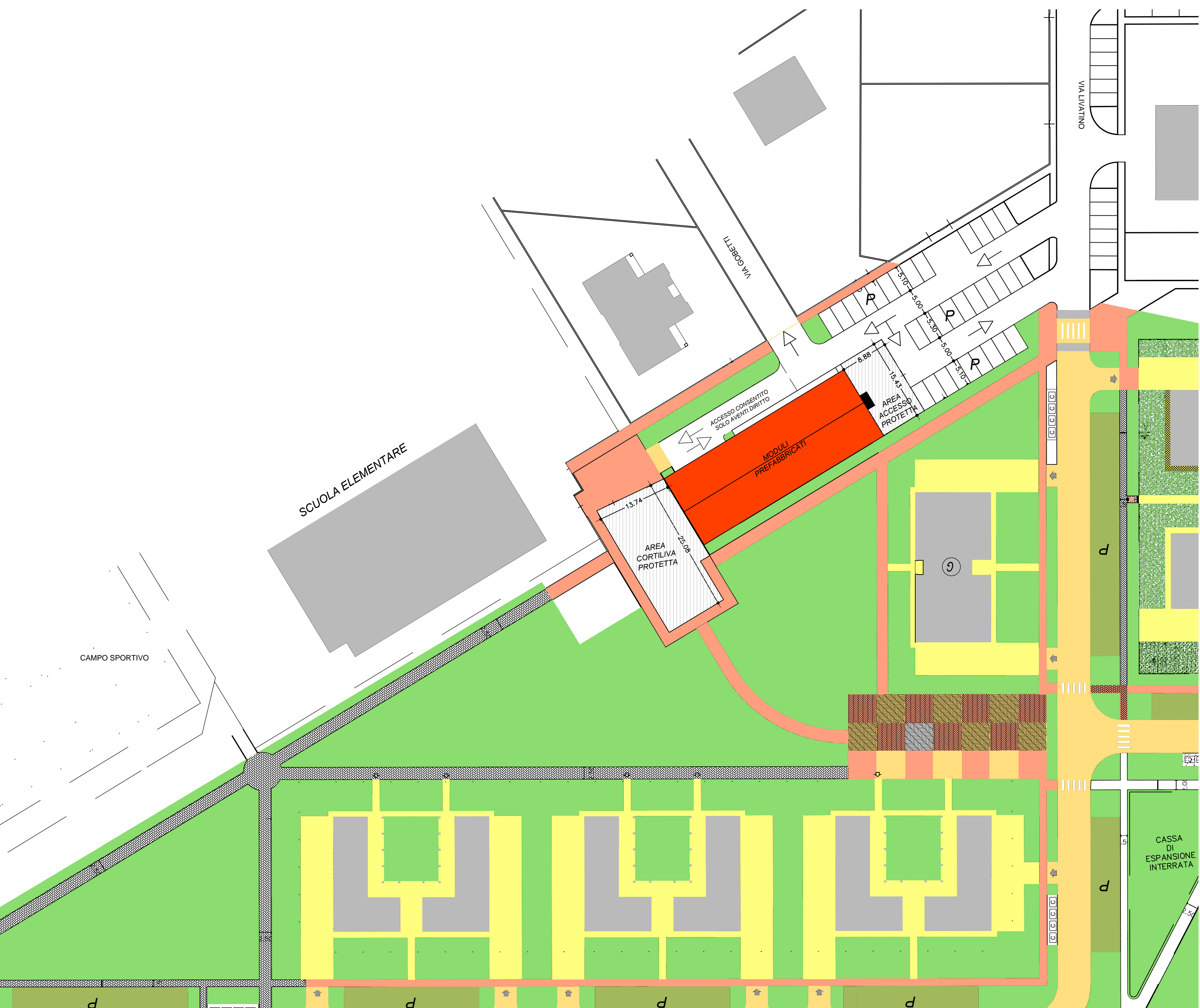
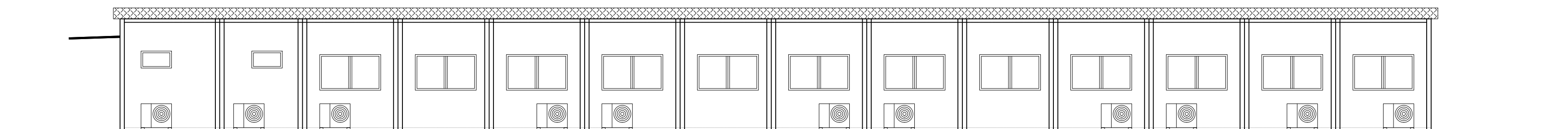
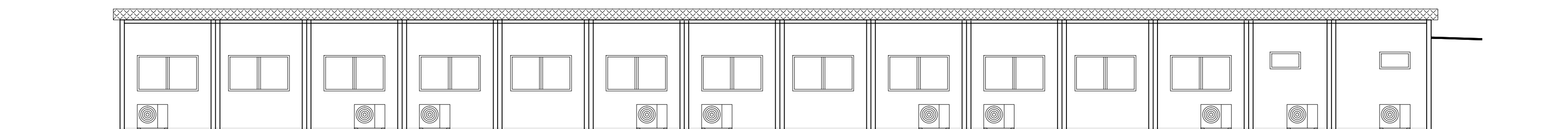
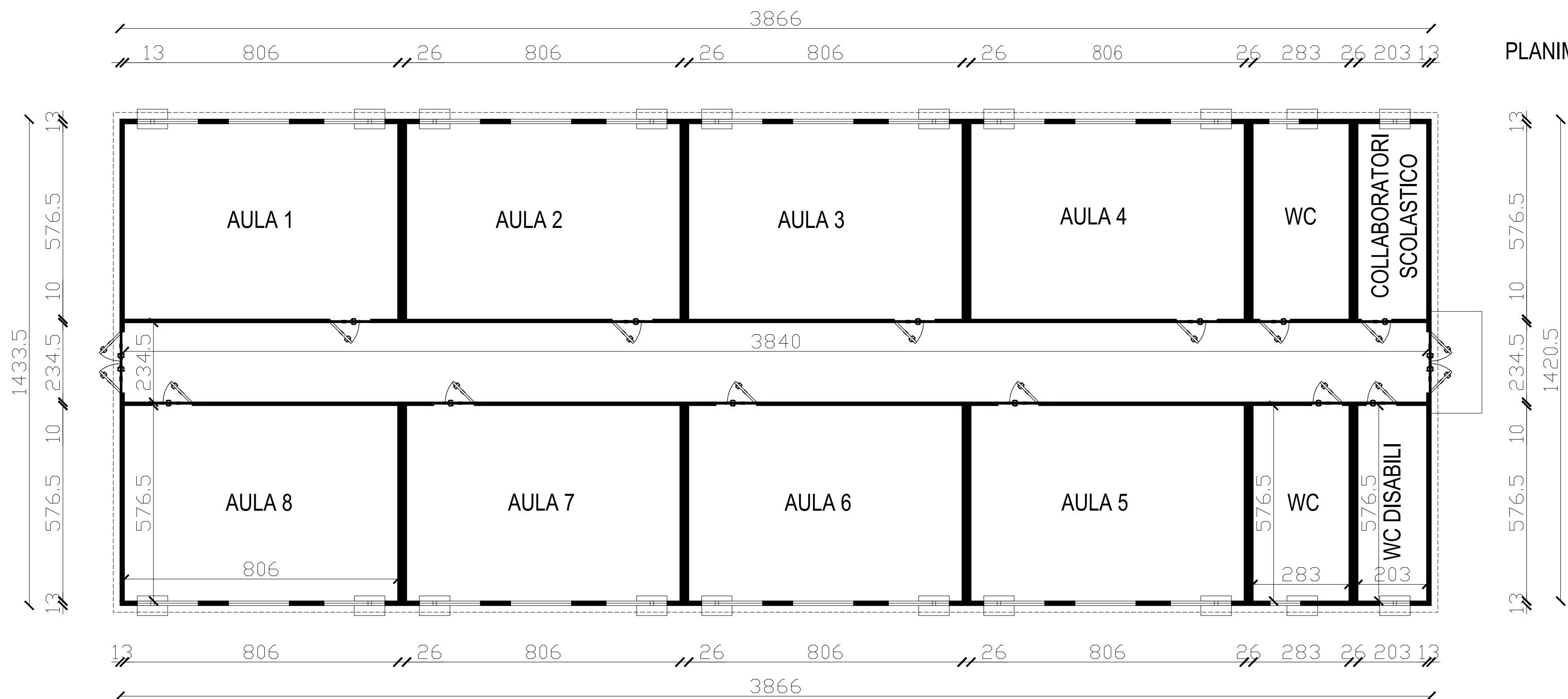


INQUADRAMENTO DELL'AREA - SCALA 1:2000

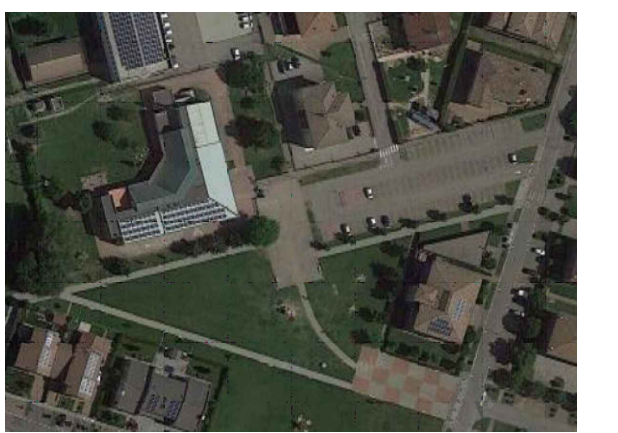


PLANIMETRIA



**COMUNE DI CAMPEGINE**  
Provincia di Reggio Emilia

SERVIZIO DI NOLEGGIO DI MODULI  
DESTINATI AD OSPITARE TEMPORANEAMENTE  
LA SEDE DELLA SCUOLA SECONDARIA DI  
PRIMO GRADO "CARLO LEVI"



TAV. 2 - PLANIMETRIA TIPO E PROSPETTI  
MODULI PREFABBRICATI

SCALA 1:100

RUP: ING. GIUSEPPINA ZAPPÀ  
PROGETTISTI: ING. GIUSEPPINA ZAPPÀ  
DOTT. URB. MIRKO LOSAVIO

PIAZZA FALIERO FORNACIARI  
42040 CAMPEGINE (RE)